

Moreland

Inner North Melbourne



Area (2011): 51km²
Population density (2011):
 3,030.4 persons/km
Major centres: Brunswick, Coburg,
 Glenroy

Moreland is located in inner north Melbourne, around 5km from the CBD. Per annum growth has been lower than average since 2002 but is projected to be above average through to 2022. Residents aged 25-44 are overrepresented compared to the state average, as are those aged 85+, while other age groups are underrepresented.

Moreland is culturally diverse, with 36% of people born overseas and 42% speaking a language other than English at home. The percentage of persons reporting fair or poor health is relatively high. While the level of psychological distress is high, the lifetime prevalence rates for anxiety and depression are close to average and the proportion of people seeking assistance for a mental health problem is one of the lowest in our catchments. However, Moreland has the highest rate of registered mental health clients across the whole North & West catchments.

Rates of smoking and drinking alcohol at levels likely to cause short term harm are relatively low. The ADIS rate for treatment episodes of care relating to pharmaceuticals is high for the 15-24 year olds, males and females. There are some risky behaviours in the 15-17 year olds relating to AOD use, with Moreland reporting the third highest rate of 15-17 year olds who have ever used marijuana across all 14 of our LGAs.

Population

	MORELAND	VICTORIA
TOTAL POPULATION	156,180	
ABORIGINAL & TORRES STRAIT ISLANDER PEOPLES	0.6%	0.8%
DIVERSITY		
PERCENT BORN OVERSEAS	36.0%	27.7%
PERCENT BORN IN NON ENGLISH SPEAKING COUNTRY	31.2%	20.9%
PERCENT SPEAKING LANGUAGE OTHER THAN ENGLISH AT HOME	41.7%	24.2%
PERCENT WITH LOW ENGLISH PROFICIENCY	7.7%	4.0%
NEW SETTLER ARRIVALS PER 100,000	1,914.5	1,415.1
SOCIO-ECONOMIC INDICATORS		
UNEMPLOYMENT RATE	5.5%	5.8%
INDEX RELATIVE SOCIO ECONOMIC DISADVANTAGE	998	1000
MEDIAN HOUSEHOLD INCOME	\$1,215	\$1,216
MORTGAGE STRESS / RENTAL STRESS	10.0% / 23.4%	11.4% / 25.1%
GAMING MACHINE LOSSES PER HEAD OF ADULT POPULATION	\$503.9	\$549.50
PERCENT OF POPULATION WITH FOOD INSECURITY	2.4%	4.6%
FAMILY INCIDENTS (RATE PER 1000 POPULATION)	9.5	10.8
TOTAL OFFENCES (RATE PER 1000 POPULATION)	73.6	72.2
SUBSTANTIATED CHILD ABUSE (RATE PER 1000 POPULATION)	4.6	6.7
CHILD PROTECTION ORDERS (RATE PER 1000 POPULATION)	3.8	5.2
CHILDREN IN OUT OF HOME CARE (RATE PER 1000 POPULATION)	3.5	4.6
COMMUNITY		
PEOPLE WHO FEEL SAFE WALKING ALONE AFTER DARK	68.1%	70.3%
PERCENT OF POPULATION NEAR TO PUBLIC TRANSPORT	99.0%	74.2%
PEOPLE WHO BELIEVE THERE ARE GOOD FACILITIES AND SERVICES IN THE LGA	78.3%	85.2%
HEALTH & WELLBEING		
PERSONS REPORTING FAIR OR POOR HEALTH	18.2%	15.9%
GENERAL PRACTICES PER 1000	1.1	1.2
PHARMACIES PER 1000	0.3	0.2

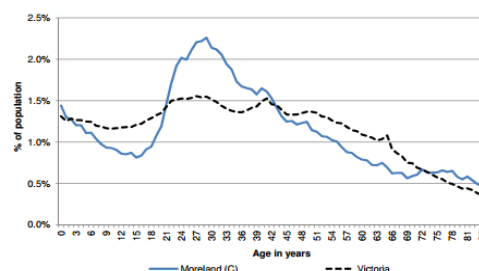
Top 5 overseas countries of birth:

- Italy (6.5%)
- India (2.8%)
- Greece (2.7%)
- UK (2.4%)
- Lebanon

Top 5 languages other than English:

- Italian (10.3%)
- Arabic (6.0%)
- Greek (5.8%)
- Turkish (2.2%)
- Mandarin (1.7%)

Age distribution (2012)



Alcohol, tobacco & other drugs in Moreland

	MORELAND	VICTORIA
PERCENTAGE PERSONS WHO ARE CURRENT SMOKERS (18+)	12.8%	15.7%
18+ FEMALES CURRENT SMOKERS	10.4%	12.9%
18+ MALES CURRENT SMOKERS	15.7%	18.5%
ALCOHOL		
PERCENTAGE PERSONS AT RISK OF SHORT TERM HARM FROM ALCOHOL CONSUMPTION	5.6%	10.2%
PURCHASED ALCOHOL IN THE LAST 7 DAYS	30.3%	36.3%
7 DAY \$ SPEND ON PACKAGED LIQUOR (OF THOSE PURCHASING)	\$41.0	\$45.00
7 DAY \$ SPEND AT A LICENSED PREMISES (OF THOSE PURCHASING)	\$40.0	\$45.00
ALCOHOL AMBULANCE RATE: TOTAL (ATTENDANCES PER 10,000)	30.3	
ALCOHOL AMBULANCE RATE: 15-24 YRS (ATTS./10,000)	38.5	
ALCOHOL AMBULANCE RATE: MALE (ATTS./10,000)	39.4	
ALCOHOL AMBULANCE RATE: FEMALE (ATTS./10,000)	21.2	
ALCOHOL ADIS RATE: TOTAL (TX EOCS PER 10,000)	17	
ALCOHOL ADIS RATE: 15-24 YRS (TX EOCS PER 10,000)	10.7	
ALCOHOL ADIS RATE: MALE (TX EOCS PER 10,000)	23.7	
ALCOHOL ADIS RATE: FEMALE (TX EOCS PER 10,000)	10.5	
ALCOHOL ED RATE: TOTAL (PRESENTATIONS PER 10,000)	13.4	
ALCOHOL ED RATE: 15-24 YRS (PRSTNS/10,000)	11.9	
ALCOHOL ED RATE: MALE (PRSTNS/10,000)	19.9	
ALCOHOL ED RATE: FEMALE (PRSTNS/10,000)	7.1	
SERIOUS ROAD INJURIES DURING HIGH ALCOHOL HOURS: TOTAL (PER 10,000)	2.8	
SERIOUS ROAD INJURIES DURING HAH: 15-24 YRS (PER 10,000)	6	
SERIOUS ROAD INJURIES DURING HAH: MALE (PER 10,000)	3.3	
SERIOUS ROAD INJURIES DURING HAH: FEMALE (PER 10,000)	2.3	
ALCOHOL ASSAULT HAH: TOTAL (PER 10,000)	10	
ALCOHOL ASSAULT HAH: 18-24 YRS (PER 10,000)	22.4	
ALCOHOL ASSAULT HAH: MALE (PER 10,000)	9.9	
ALCOHOL ASSAULT HAH: FEMALE (PER 10,000)	9.8	
ALCOHOL FAMILY VIOLENCE RATE: TOTAL (DEFINITE INCIDENTS PER 10,000)	13.1	
ALCOHOL FAMILY VIOLENCE RATE: 18-24 YRS (DEFINITE INCIDENTS PER 10,000)	13.3	
ALCOHOL FAMILY VIOLENCE RATE: MALE (DEFINITE INCIDENTS PER 10,000)	6.3	
ALCOHOL FAMILY VIOLENCE RATE: FEMALE (DEFINITE INCIDENTS PER 10,000)	19.6	
YOUNG PEOPLE		
PERCENT 15-17 YEAR OLDS WHO DRANK ALCOHOL IN THE PAST 30 DAYS	37.5%	24.7%
PERCENT 15-17 YEAR OLDS WHO SMOKED IN THE PAST 30 DAYS	24.4%	12.9%
PERCENT 15-17 YEAR OLDS WHO EVER - USED MARIJUANA	23.9%	10.9%
PERCENT 15-17 YEAR OLDS WHO EVER - SNIFFED GLUE OR CHROMED	9.0%	7.8%
PERCENT 15-17 YEAR OLDS WHO EVER - USED OTHER ILLEGAL DRUGS	3.8%	3.0%
PHARMACEUTICALS		
PHARMACEUTICAL AMBULANCE RATE: TOTAL (ATTENDANCES PER 10,000)	23.4	
PHARMACEUTICAL AMBULANCE RATE: 15-24 YRS (ATTS./10,000)	17.9	
PHARMACEUTICAL AMBULANCE RATE: MALE (ATTS./10,000)	22.7	
PHARMACEUTICAL AMBULANCE RATE: FEMALE (ATTS./10,000)	24.1	
PHARMACEUTICAL ADIS RATE: TOTAL (TX EOCS PER 10,000)	3	
PHARMACEUTICAL ADIS RATE: 15-24 YRS (TX EOCS PER 10,000)	6	
PHARMACEUTICAL ADIS RATE: MALE (TX EOCS PER 10,000)	2.9	
PHARMACEUTICAL ADIS RATE: FEMALE (TX EOCS PER 10,000)	3	
PHARMACEUTICAL ED PRESENTATION RATE: TOTAL (PRESENTATIONS PER 10,000)	12.9	
PHARMACEUTICAL ED RATE: 15-24YRS (PRSTNS/10,000)	27.3	
PHARMACEUTICAL ED RATE: MALE (PRSTNS/10,000)	11	
PHARMACEUTICAL ED RATE: FEMALE (PRSTNS/10,000)	14.7	
ILLICIT DRUGS		
ILLICIT AMBULANCE RATE: TOTAL (ATTS./10,000)	11.4	
ILLICIT AMBULANCE RATE: 15-24YRS (ATTS./10,000)	33.6	
ILLICIT AMBULANCE RATE: MALE (ATTS./10,000)	13.6	
ILLICIT AMBULANCE RATE: FEMALE (ATTS./10,000)	9.1	
ILLICIT ADIS RATE: TOTAL (TX EOCS PER 10,000)	25.8	
ILLICIT ADIS RATE: 15-24 YRS (TX EOCS PER 10,000)	60.4	
ILLICIT ADIS RATE: MALE (TX EOCS PER 10,000)	36.9	
ILLICIT ADIS RATE: FEMALE (TX EOCS PER 10,000)	14.8	
ILLICIT ED RATE: TOTAL (PRSTNS/10,000)	1.9	
ILLICIT ED RATE: 15-24 YRS (PRSTNS/10,000)	n/a	
ILLICIT ED RATE: MALE (PRSTNS/10,000)	3	
ILLICIT ED RATE: FEMALE (PRSTNS/10,000)	0.76	
SERVICE USE & ACCESS		
DRUG USE & POSSESSION OFFENCES PER 1000 POPULATION	2.9	3.8
DRUG AND ALCOHOL CLIENTS PER 1000	5.5	5.8

Comparisons & context:

*Red text – shows where the figure is in the top 3 highest rates for all 14 LGAs in the North & West catchments.

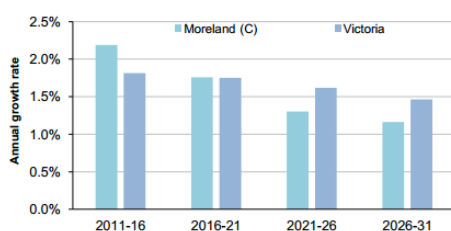
* Orange text – shows that the rate is higher than the state average

Mental health in Moreland

	MORELAND	VICTORIA
PEOPLE REPORTING HIGH/VERY HIGH LEVELS OF PSYCHOLOGICAL DISTRESS (RANK)	14.4% (7)	11.1%
LIFETIME PREVALENCE OF ANXIETY AND DEPRESSION M/ F	14.7/ 29.4	14.6/25.0
SERVICE USE & ACCESS		
NUMBER OF REGISTERED MENTAL HEALTH CLIENTS	2062	
REGISTERED MENTAL HEALTH CLIENTS PER 1000 POP (RANK)	13.2 (35)	11.1
MHCSS CLIENTS 2014	101	
MHCSS CLIENTS PER 1000 POPULATION	0.93	
PROPORTION OF PEOPLE WHO SOUGHT PROFESSIONAL HELP FOR A MENTAL HEALTH PROBLEM	10.90%	12.40%
YOUNG PEOPLE		
CHILDREN WITH EMOTIONAL/BEHAVIOURAL PROBLEMS AT SCHOOL AGE	3.1% (50)	4.3%
ADOLESCENTS WHO REPORT BEING RECENTLY BULLIED	20.1% (26)	17.9%

Population projections

Average annual population growth rate 2011 to 2031



This graph shows the average annual population growth projections for Moreland to 2031.

Aligned planning priorities



The vision for the **Moreland Health and Wellbeing Plan** is that “people’s health and wellbeing is at the centre of all planning and decision making.” Long term goals include improving mental health and decreasing alcohol and other drug use. There are a number of specific strategies to reduce alcohol and drug consumption including information provision, forming partnerships to support harm minimisation and the promotion of regulation around alcohol and tobacco sales.



The **Inner North West Melbourne Medicare Local Comprehensive Needs Assessment 2014-2017** identifies 5 key priorities – 1) the need to coordinate care across service system 2) prevention and management of chronic disease 3) health literacy 4) mental and emotional health and wellbeing and 5) alcohol and other drugs. Both the mental health and AoD response include stakeholder consultation/ forums in early 2015 and discussion papers to further identify issues.

The mental health response also aims to increase Access to Allied Psychological Services (ATAPS) and counselling services (including for young people), the PACER response, an after-hours nurse outreach program and a GP mental health education series. The AoD response includes support for the pharmacotherapy network.



The **Inner North West Primary Care Partnership** has a vision of strong partnerships, equitable outcomes and healthy communities. It has two strategic priorities 1) prevention of violence against women (inclusive of children and families) and 2) improving system capacity to increase prevention and support people from priority populations with chronic disease and co-morbidities. Health promotion priorities are identified as mental health, physical activity, harm from addiction/dependence (alcohol, tobacco, gambling and other drugs); health impacts of climate change; access to nutritious food, prevention of family violence and reducing health inequalities (including for Aboriginal people)