

# Banyule

## North Melbourne



**Area (2011):** 63km<sup>2</sup>  
**Population density (2011):**  
 1,967.7 persons/ km<sup>2</sup>  
**Major centres:** Heidelberg,  
 Ivanhoe, Greensborough

Banyule is a city fringe municipality to the north east of Melbourne's CBD. Age distribution is generally aligned to state average and population growth is below average. The area is predominantly English speaking (lower than average proportion of people speak a language other than English at home), and is relatively advantaged across most major economic indicators. It has amongst the lowest rates of mortgage stress, food insecurity and being overweight in the State. However, there is a pocket of notable socio-economic disadvantage in the Heidelberg West area.

Banyule has one of the highest percentages of the population who commute for more than 2 hours per day – a measure that is closely linked with mental health risks. The levels of reported psychological distress is the third highest across our 14 local government areas and males in Banyule have a significantly higher lifetime prevalence of anxiety and depression (26.1% compared to 14.6% in the state).

There is a high smoking rate, especially among males. The data shows women are accessing services at a higher than average rate for illicit drug use and alcohol use, and the ADIS rate for illicit drug use is among the top 3 for young people (15-24years). There is a high rate of alcohol-related family violence.

## Population

	BANYULE	VICTORIA
<b>TOTAL POPULATION</b>	123,544	
<b>ABORIGINAL &amp; TORRES STRAIT ISLANDER PEOPLES</b>	0.6%	0.8%
<b>DIVERSITY</b>		
<b>PERCENT BORN OVERSEAS</b>	23.1%	27.7%
<b>PERCENT BORN IN NON ENGLISH SPEAKING COUNTRY</b>	17.3%	20.9%
<b>PERCENT SPEAKING LANGUAGE OTHER THAN ENGLISH AT HOME</b>	20.3%	24.2%
<b>PERCENT WITH LOW ENGLISH PROFICIENCY</b>	2.8%	4.0%
<b>NEW SETTLER ARRIVALS PER 100,000</b>	915.5	1,415.1
<b>SOCIO-ECONOMIC INDICATORS</b>		
<b>UNEMPLOYMENT RATE</b>	3.9%	5.8%
<b>INDEX RELATIVE SOCIO ECONOMIC DISADVANTAGE</b>	1047	1000
<b>MEDIAN HOUSEHOLD INCOME</b>	\$1,394	\$1,216
<b>MORTGAGE STRESS / RENTAL STRESS</b>	7.6% / 22.7%	11.4% / 25.1%
<b>GAMING MACHINE LOSSES PER HEAD OF ADULT POPULATION</b>	\$552.0	\$549.50
<b>PERCENT OF POPULATION WITH FOOD INSECURITY</b>	2.4%	4.6%
<b>FAMILY INCIDENTS (RATE PER 1000 POPULATION)</b>	9.2	10.8
<b>TOTAL OFFENCES (RATE PER 1000 POPULATION)</b>	58.0	72.2
<b>SUBSTANTIATED CHILD ABUSE (RATE PER 1000 POPULATION)</b>	5.9	6.7
<b>CHILD PROTECTION ORDERS (RATE PER 1000 POPULATION)</b>	4.7	5.2
<b>CHILDREN IN OUT OF HOME CARE (RATE PER 1000 POPULATION)</b>	4.9	4.6
<b>COMMUNITY</b>		
<b>PEOPLE WHO FEEL SAFE WALKING ALONE AFTER DARK</b>	77.4%	70.3%
<b>PERCENT OF POPULATION NEAR TO PUBLIC TRANSPORT</b>	90.3%	74.2%
<b>PEOPLE WHO BELIEVE THERE ARE GOOD FACILITIES AND SERVICES IN THE LGA</b>	91.7%	85.2%
<b>HEALTH &amp; WELLBEING</b>		
<b>PERSONS REPORTING FAIR OR POOR HEALTH</b>	16.7%	15.9%
<b>GENERAL PRACTICES PER 1000</b>	1.2	1.2
<b>PHARMACIES PER 1000</b>	0.3	0.2

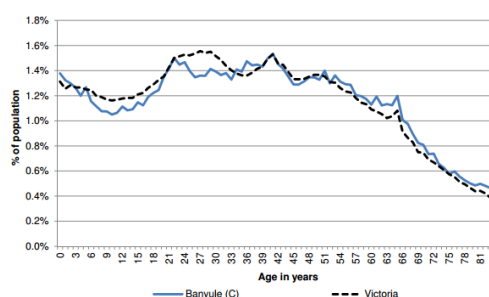
### Top 5 overseas countries of birth:

- UK (3.7%)
- Italy (2.2%)
- China (2.1%)
- India (1.5%)
- NZ (1.2%)

### Top 5 languages other than English:

- Italian (3.6%)
- Greek (2.2%)
- Mandarin (2.2%)
- Cantonese (1.1%)
- Arabic (1.0%)

## Age distribution (2012)



## Alcohol, tobacco & other drugs in Banyule

	BANYULE	VICTORIA
PERCENTAGE PERSONS WHO ARE CURRENT SMOKERS (18+)	16.9%	15.7%
18+ FEMALES CURRENT SMOKERS	10.2%	12.9%
18+ MALES CURRENT SMOKERS	24.7%	18.5%
<b>ALCOHOL</b>		
PERCENTAGE PERSONS AT RISK OF SHORT TERM HARM FROM ALCOHOL CONSUMPTION	10.6%	10.2%
PURCHASED ALCOHOL IN THE LAST 7 DAYS	43.1%	36.3%
7 DAY \$ SPEND ON PACKAGED LIQUOR (OF THOSE PURCHASING)	\$48.0	\$45.00
7 DAY \$ SPEND AT A LICENSED PREMISES (OF THOSE PURCHASING)	\$40.0	\$45.00
ALCOHOL AMBULANCE RATE: TOTAL (ATTENDANCES PER 10,000)	20	
ALCOHOL AMBULANCE RATE: 15-24 YRS (ATTS./10,000)	25.3	
ALCOHOL AMBULANCE RATE: MALE (ATTS./10,000)	24.9	
ALCOHOL AMBULANCE RATE: FEMALE (ATTS./10,000)	15.3	
ALCOHOL ADIS RATE: TOTAL (TX EOCS PER 10,000)	14.8	
ALCOHOL ADIS RATE: 15-24 YRS (TX EOCS PER 10,000)	23.4	
ALCOHOL ADIS RATE: MALE (TX EOCS PER 10,000)	17.5	
ALCOHOL ADIS RATE: FEMALE (TX EOCS PER 10,000)	12.3	
ALCOHOL ED RATE: TOTAL (PRESENTATIONS PER 10,000)	10.4	
ALCOHOL ED RATE: 15-24 YRS (PRSTNS/10,000)	25.9	
ALCOHOL ED RATE: MALE (PRSTNS/10,000)	12.5	
ALCOHOL ED RATE: FEMALE (PRSTNS/10,000)	8.5	
SERIOUS ROAD INJURIES DURING HIGH ALCOHOL HOURS: TOTAL (PER 10,000)	2.3	
SERIOUS ROAD INJURIES DURING HAH: 15-24 YRS (PER 10,000)	4.9	
SERIOUS ROAD INJURIES DURING HAH: MALE (PER 10,000)	2.8	
SERIOUS ROAD INJURIES DURING HAH: FEMALE (PER 10,000)	1.7	
ALCOHOL ASSAULT HAH: TOTAL (PER 10,000)	8.9	
ALCOHOL ASSAULT HAH: 18-24 YRS (PER 10,000)	23.7	
ALCOHOL ASSAULT HAH: MALE (PER 10,000)	10.1	
ALCOHOL ASSAULT HAH: FEMALE (PER 10,000)	7.2	
ALCOHOL FAMILY VIOLENCE RATE: TOTAL (DEFINITE INCIDENTS PER 10,000)	20.7	
ALCOHOL FAMILY VIOLENCE RATE: 18-24 YRS (DEFINITE INCIDENTS PER 10,000)	22	
ALCOHOL FAMILY VIOLENCE RATE: MALE (DEFINITE INCIDENTS PER 10,000)	11.7	
ALCOHOL FAMILY VIOLENCE RATE: FEMALE (DEFINITE INCIDENTS PER 10,000)	29.3	
<b>YOUNG PEOPLE</b>		
PERCENT 15-17 YEAR OLDS WHO DRANK ALCOHOL IN THE PAST 30 DAYS	46.4%	24.7%
PERCENT 15-17 YEAR OLDS WHO SMOKED IN THE PAST 30 DAYS	17.8%	12.9%
PERCENT 15-17 YEAR OLDS WHO EVER - USED MARIJUANA	15.2%	10.9%
PERCENT 15-17 YEAR OLDS WHO EVER - SNIFFED GLUE OR CHROMED	7.3%	7.8%
PERCENT 15-17 YEAR OLDS WHO EVER - USED OTHER ILLEGAL DRUGS	5.0%	3.0%
<b>PHARMACEUTICALS</b>		
PHARMACEUTICAL AMBULANCE RATE: TOTAL (ATTENDANCES PER 10,000)	17.6	
PHARMACEUTICAL AMBULANCE RATE: 15-24 YRS (ATTS./10,000)	19.1	
PHARMACEUTICAL AMBULANCE RATE: MALE (ATTS./10,000)	15.1	
PHARMACEUTICAL AMBULANCE RATE: FEMALE (ATTS./10,000)	20	
PHARMACEUTICAL ADIS RATE: TOTAL (TX EOCS PER 10,000)	1.6	
PHARMACEUTICAL ADIS RATE: 15-24 YRS (TX EOCS PER 10,000)	n/a	
PHARMACEUTICAL ADIS RATE: MALE (TX EOCS PER 10,000)	0.96	
PHARMACEUTICAL ADIS RATE: FEMALE (TX EOCS PER 10,000)	2.2	
PHARMACEUTICAL ED PRESENTATION RATE: TOTAL (PRESENTATIONS PER 10,000)	10.1	
PHARMACEUTICAL ED RATE: 15-24YRS (PRSTNS/10,000)	24.1	
PHARMACEUTICAL ED RATE: MALE (PRSTNS/10,000)	7.6	
PHARMACEUTICAL ED RATE: FEMALE (PRSTNS/10,000)	12.5	
<b>ILLICIT DRUGS</b>		
ILLICIT AMBULANCE RATE: TOTAL (ATTS./10,000)	9	
ILLICIT AMBULANCE RATE: 15-24YRS (ATTS./10,000)	22.9	
ILLICIT AMBULANCE RATE: MALE (ATTS./10,000)	12.1	
ILLICIT AMBULANCE RATE: FEMALE (ATTS./10,000)	6	
ILLICIT ADIS RATE: TOTAL (TX EOCS PER 10,000)	25.9	
ILLICIT ADIS RATE: 15-24 YRS (TX EOCS PER 10,000)	68	
ILLICIT ADIS RATE: MALE (TX EOCS PER 10,000)	32.9	
ILLICIT ADIS RATE: FEMALE (TX EOCS PER 10,000)	19.2	
ILLICIT ED RATE: TOTAL (PRSTNS/10,000)	1.5	
ILLICIT ED RATE: 15-24 YRS (PRSTNS/10,000)	n/a	
ILLICIT ED RATE: MALE (PRSTNS/10,000)	1.8	
ILLICIT ED RATE: FEMALE (PRSTNS/10,000)	1.1	
<b>SERVICE USE &amp; ACCESS</b>		
DRUG USE & POSSESSION OFFENCES PER 1000 POPULATION	2.6	3.8
DRUG AND ALCOHOL CLIENTS PER 1000	4.6	5.8

### Comparisons & context:

\*Red text – shows where the figure is in the top 3 highest rates for all 14 LGAs in the North & West catchments.

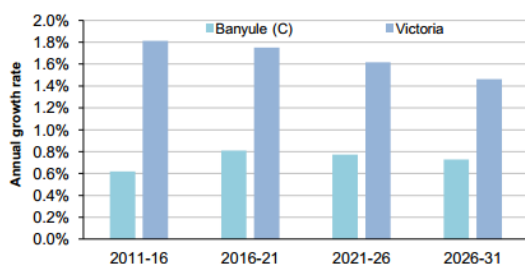
\* Orange text – shows that the rate is higher than the state average

## Mental health in Banyule

	BANYULE	VICTORIA
PEOPLE REPORTING HIGH/VERY HIGH LEVELS OF PSYCHOLOGICAL DISTRESS (RANK)	14.7% (5)	11.10%
LIFETIME PREVALENCE OF ANXIETY AND DEPRESSION M/ F	26.1/ 21.5	14.6/2.50
<b>SERVICE USE &amp; ACCESS</b>		
NUMBER OF REGISTERED MENTAL HEALTH CLIENTS	1,186	
REGISTERED MENTAL HEALTH CLIENTS PER 1000 POP (RANK)	9.6 (59)	11.1
MHCSS CLIENTS 2014	176	
MHCSS CLIENTS 2014 PER 1000 POPULATION	2.14	
PROPORTION OF PEOPLE WHO SOUGHT PROFESSIONAL HELP FOR A MENTAL HEALTH PROBLEM	14.50%	12.40%
<b>YOUNG PEOPLE</b>		
CHILDREN WITH EMOTIONAL/BEHAVIOURAL PROBLEMS AT SCHOOL AGE (RANK)	2.6% (54)	4.30%
ADOLESCENTS WHO REPORT BEING RECENTLY BULLIED (RANK)	16.5% (54)	17.90%

## Population projections

Average annual population growth rate 2011 to 2031



Projected population growth for Banyule is below the state average.

## Aligned planning priorities



The **Banyule Health and Wellbeing Strategy** sets out to: promote health and wellbeing; provide services for people at important life stages; promote safety and resilience in our community; celebrate and promote Banyule's diversity and heritage; support people to achieve their economic potential; plan and prepare for emergency events. Key target groups are under four year olds and people living in areas of high concentration of public housing. Neither mental health issues nor AOD issues are specifically identified.



The **Northern Melbourne Medicare Local** has a focus on systems reform, supporting planning, integrations and coordination of primary health care services across four key areas – including mental health and service access and quality. Under mental health NMML will lead planning; integration and coordination of primary health care services for people with a mental illness, involving workshops and preparation of paper. Under service access and quality, NMML will support the active integration of after-hours pilot of ReGen AoD service and NPACER program and funding to extend a joint police and mental health clinical project to provide a dual secondary response.



The **North East Primary Care Partnership (NEPCP) Strategic Plan** identifies people with a mental illness as one of its four target groups. Its focus is on collaboration, integration and innovation. The NEPCP auspiced the Physical Health Matters Too project to improve physical health screening for people with a mental illness.

**North East Mental Health Alliance** has identified improving dual diagnosis capability and service pathways for people with a mental illness and an Alcohol or other drug issue as key priorities.