

Whittlesea

North Melbourne



Area (2011): 490km²

Population density (2011): 328.4 persons/ km²

Major centres: Bundoora, Thomastown, Epping, Mill Park, Lalor

Population

Whittlesea is about 20km north of Melbourne's CBD. It has had rapid population growth since 2002, and this is set to continue. It has a younger than average age profile (20% are under 14 years old), and a high level of cultural diversity (44.5% speak a language other than English at home).

Unemployment is above average, and there are very high levels of mortgage and rental stress. Whittlesea residents are the least likely to visit green space each week, are ranked second for sleeping less than seven hours a night and commute times are high (long commute time is associated with a range of negative health effects). Poor self-reported health is the fourth highest in the State and the rate of GP attendance is the second highest. The proportion of Whittlesea residents accessing professional support for mental health issues (10.4%) is lower than the state average (12.4%).

Of our 14 LGAs in the North & West AOD Partnership, Whittlesea has the highest percentage of 15-17 year olds who drank alcohol in the past 30 days (69.8% compared to a state average of 24.7%), the highest percentage of 15-17 year olds who sniffed glue or chromed (17.2% compared to a state average of 7.8%) and the second highest percentage of 15-17 year olds who smoked tobacco in the last 30 days (28.8% compared to a state average of 12.9%). Family violence incidence is also among the top 3 highest rates for our whole catchment (12.5 per 1000 population).

The rate of pharmacies, allied health services and GPs per 1000 of the population is ranked within the bottom ten of the State. As a measure of service distribution, this may mean people find it difficult to access the health services they need.

	WHITTLESEA	VICTORIA
TOTAL POPULATION	169,471	
ABORIGINAL & TORRES STRAIT ISLANDER PEOPLES	0.8%	0.8%
DIVERSITY		
PERCENT BORN OVERSEAS	35.2%	27.7%
PERCENT BORN IN NON ENGLISH SPEAKING COUNTRY	31.8%	20.9%
PERCENT SPEAKING LANGUAGE OTHER THAN ENGLISH AT HOME	44.5%	24.2%
PERCENT WITH LOW ENGLISH PROFICIENCY	7.8%	4.0%
NEW SETTLER ARRIVALS PER 100,000	1,674.0	1,415.1
SOCIO-ECONOMIC INDICATORS		
UNEMPLOYMENT RATE	8.1%	5.8%
INDEX RELATIVE SOCIO ECONOMIC DISADVANTAGE	989	1000
MEDIAN HOUSEHOLD INCOME	\$1,275	\$1,216
MORTGAGE STRESS / RENTAL STRESS	15.4% / 29.8%	11.4% / 25.1%
GAMING MACHINE LOSSES PER HEAD OF ADULT POPULATION	\$697.60	\$549.50
PERCENT OF POPULATION WITH FOOD INSECURITY	6.3%	4.6%
FAMILY INCIDENTS (RATE PER 1000 POPULATION)	12.5	10.8
TOTAL OFFENCES (RATE PER 1000 POPULATION)	67.7	72.2
SUBSTANTIATED CHILD ABUSE (RATE PER 1000 POPULATION)	5.4	6.7
CHILD PROTECTION ORDERS (RATE PER 1000 POPULATION)	3.1	5.2
CHILDREN IN OUT OF HOME CARE (RATE PER 1000 POPULATION)	2.9	4.6
COMMUNITY		
PEOPLE WHO FEEL SAFE WALKING ALONE AFTER DARK	68.4%	70.3%
PERCENT OF POPULATION NEAR TO PUBLIC TRANSPORT	76.9%	74.2%
PEOPLE WHO BELIEVE THERE ARE GOOD FACILITIES AND SERVICES IN THE LGA	86.3%	85.2%
HEALTH & WELLBEING		
PEOPLE REPORTING HIGH/V. HIGH LEVELS OF PSYCHOLOGICAL DISTRESS	13.6%	11.1%
PERSONS REPORTING FAIR OR POOR HEALTH	22.8%	15.9%
GENERAL PRACTICES PER 1000	1.1	1.2
PHARMACIES PER 1000	0.1	0.2

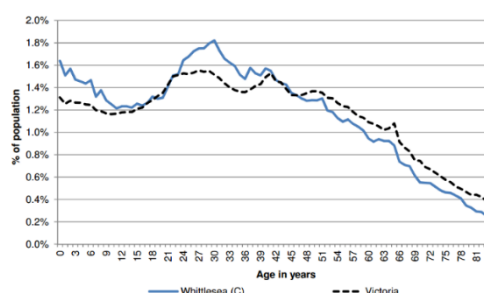
Top 5 overseas countries of birth:

- Italy (4.2%)
- Former Macedonia (3.9%)
- India (3.6%)
- Greece (2.7%)
- UK (2.0%)

Top 5 languages other than English:

- Macedon. (7.0%)
- Italian (7.0%)
- Greek (4.9%)
- Arabic (4.8%)
- Vietnamese (2.7%)

Age distribution (2012)



Alcohol, tobacco & other drugs in Whittlesea

	WHITTLESEA	VICTORIA
PERCENTAGE PERSONS WHO ARE CURRENT SMOKERS (18+)	21.9%	15.7%
18+ FEMALES CURRENT SMOKERS	20.2%	12.9%
18+ MALES CURRENT SMOKERS	23.7%	18.5%
ALCOHOL		
PERCENTAGE PERSONS AT RISK OF SHORT TERM HARM FROM ALCOHOL CONSUMPTION	6.2%	10.2%
PURCHASED ALCOHOL IN THE LAST 7 DAYS	20.7%	36.3%
7 DAY \$ SPEND ON PACKAGED LIQUOR (OF THOSE PURCHASING)	\$39.0	\$45.00
7 DAY \$ SPEND AT A LICENSED PREMISES (OF THOSE PURCHASING)	\$53.0	\$45.00
ALCOHOL AMBULANCE RATE: TOTAL (ATTENDANCES PER 10,000)	18.9	
ALCOHOL AMBULANCE RATE: 15-24 YRS (ATTS./10,000)	25.3	
ALCOHOL AMBULANCE RATE: MALE (ATTS./10,000)	24.1	
ALCOHOL AMBULANCE RATE: FEMALE (ATTS./10,000)	13.6	
ALCOHOL ADIS RATE: TOTAL (TX EOCS PER 10,000)	15.5	
ALCOHOL ADIS RATE: 15-24 YRS (TX EOCS PER 10,000)	14.8	
ALCOHOL ADIS RATE: MALE (TX EOCS PER 10,000)	21.7	
ALCOHOL ADIS RATE: FEMALE (TX EOCS PER 10,000)	9.3	
ALCOHOL ED RATE: TOTAL (PRESENTATIONS PER 10,000)	8.4	
ALCOHOL ED RATE: 15-24 YRS (PRSTNS/10,000)	13.3	
ALCOHOL ED RATE: MALE (PRSTNS/10,000)	11.4	
ALCOHOL ED RATE: FEMALE (PRSTNS/10,000)	5.5	
SERIOUS ROAD INJURIES DURING HIGH ALCOHOL HOURS: TOTAL (PER 10,000)	3.5	
SERIOUS ROAD INJURIES DURING HAH: 15-24 YRS (PER 10,000)	7.7	
SERIOUS ROAD INJURIES DURING HAH: MALE (PER 10,000)	4.2	
SERIOUS ROAD INJURIES DURING HAH: FEMALE (PER 10,000)	2.8	
ALCOHOL ASSAULT HAH: TOTAL (PER 10,000)	9.6	
ALCOHOL ASSAULT HAH: 18-24 YRS (PER 10,000)	19.0	
ALCOHOL ASSAULT HAH: MALE (PER 10,000)	9	
ALCOHOL ASSAULT HAH: FEMALE (PER 10,000)	10	
ALCOHOL FAMILY VIOLENCE RATE: TOTAL (DEFINITE INCIDENTS PER 10,000)	17	
ALCOHOL FAMILY VIOLENCE RATE: 18-24 YRS (DEFINITE INCIDENTS PER 10,000)	24.3	
ALCOHOL FAMILY VIOLENCE RATE: MALE (DEFINITE INCIDENTS PER 10,000)	8.5	
ALCOHOL FAMILY VIOLENCE RATE: FEMALE (DEFINITE INCIDENTS PER 10,000)	25.3	
YOUNG PEOPLE		
PERCENT 15-17 YEAR OLDS WHO DRANK ALCOHOL IN THE PAST 30 DAYS	69.8%	24.7%
PERCENT 15-17 YEAR OLDS WHO SMOKED IN THE PAST 30 DAYS	28.8%	12.9%
PERCENT 15-17 YEAR OLDS WHO EVER - USED MARIJUANA	21.2%	10.9%
PERCENT 15-17 YEAR OLDS WHO EVER - SNIFFED GLUE OR CHROMED	17.2%	7.8%
PERCENT 15-17 YEAR OLDS WHO EVER - USED OTHER ILLEGAL DRUGS	4.7%	3.0%
PHARMACEUTICALS		
PHARMACEUTICAL AMBULANCE RATE: TOTAL (ATTENDANCES PER 10,000)	17.8	
PHARMACEUTICAL AMBULANCE RATE: 15-24 YRS (ATTS./10,000)	16.3	
PHARMACEUTICAL AMBULANCE RATE: MALE (ATTS./10,000)	17.5	
PHARMACEUTICAL AMBULANCE RATE: FEMALE (ATTS./10,000)	18	
PHARMACEUTICAL ADIS RATE: TOTAL (TX EOCS PER 10,000)	1	
PHARMACEUTICAL ADIS RATE: 15-24 YRS (TX EOCS PER 10,000)	0	
PHARMACEUTICAL ADIS RATE: MALE (TX EOCS PER 10,000)	0.88	
PHARMACEUTICAL ADIS RATE: FEMALE (TX EOCS PER 10,000)	1.2	
PHARMACEUTICAL ED PRESENTATION RATE: TOTAL (PRESENTATIONS PER 10,000)	10.9	
PHARMACEUTICAL ED RATE: 15-24YRS (PRSTNS/10,000)	25.3	
PHARMACEUTICAL ED RATE: MALE (PRSTNS/10,000)	8.2	
PHARMACEUTICAL ED RATE: FEMALE (PRSTNS/10,000)	13.5	
ILLICIT DRUGS		
ILLICIT AMBULANCE RATE: TOTAL (ATTS./10,000)	8.2	
ILLICIT AMBULANCE RATE: 15-24YRS (ATTS./10,000)	18.2	
ILLICIT AMBULANCE RATE: MALE (ATTS./10,000)	12	
ILLICIT AMBULANCE RATE: FEMALE (ATTS./10,000)	4.4	
ILLICIT ADIS RATE: TOTAL (TX EOCS PER 10,000)	22.6	
ILLICIT ADIS RATE: 15-24 YRS (TX EOCS PER 10,000)	54.2	
ILLICIT ADIS RATE: MALE (TX EOCS PER 10,000)	33.4	
ILLICIT ADIS RATE: FEMALE (TX EOCS PER 10,000)	11.9	
ILLICIT ED RATE: TOTAL (PRSTNS/10,000)	2.4	
ILLICIT ED RATE: 15-24 YRS (PRSTNS/10,000)	4.3	
ILLICIT ED RATE: MALE (PRSTNS/10,000)	3.1	
ILLICIT ED RATE: FEMALE (PRSTNS/10,000)	1.7	
SERVICE USE & ACCESS		
DRUG USE & POSSESSION OFFENCES PER 1000 POPULATION	3.3	3.8
DRUG AND ALCOHOL CLIENTS PER 1000	4.8	5.8

Comparisons & context:

*Red text – shows where the figure is in the top 3 highest rates for all 14 LGAs in the North & West catchments.

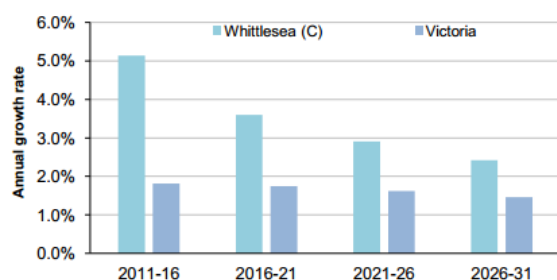
* Orange text – shows that the rate is higher than the state average

Mental health in Whittlesea

	WHITTLESEA	VICTORIA
PEOPLE REPORTING HIGH/VERY HIGH LEVELS OF PSYCHOLOGICAL DISTRESS (RANK)	13.6% (11)	11.10%
LIFETIME PREVALENCE OF ANXIETY AND DEPRESSION M/ F	10.8/ 26.9	14.6/25.0
SERVICE USE & ACCESS		
NUMBER OF REGISTERED MENTAL HEALTH CLIENTS	1779	
REGISTERED MENTAL HEALTH CLIENTS PER 1000 POP (RANK)	10.5 (54)	11.1
MHCSS CLIENTS 2014	91	
MHCSS CLIENTS 2014 PER 1000 POPULATION	0.78	
PROPORTION OF PEOPLE WHO SOUGHT PROFESSIONAL HELP FOR A MENTAL HEALTH PROBLEM	10.1%	12.4%
YOUNG PEOPLE		
CHILDREN WITH EMOTIONAL/BEHAVIOURAL PROBLEMS AT SCHOOL AGE (RANK)	5.3% (25)	4.3%
ADOLESCENTS WHO REPORT BEING RECENTLY BULLIED (RANK)	19.0% (36)	17.9%

Population projections

Average annual population growth rate 2011 to 2031



This graph shows Whittlesea's projected population growth rate is much higher than average to 2031.

High levels of population growth require strategic planning and management strategies to ensure that service provision and community infrastructure continues to meet community need.

Aligned planning priorities



The **City of Whittlesea Health and Wellbeing Plan** has seven future directions 1) *inclusive and engaged community*; 2), *accessibility in, out and around our city* – which includes a focus on access to health services, including mental health services, and particularly for young people; 3) *growing our economy*; 4) *places and spaces to connect people*; 5) *health and wellbeing* –including to address smoking rates and harmful use of alcohol; 6) *living sustainably* and 7) *good corporate governance*.



The **Northern Melbourne Medicare Local** has a focus on systems reform, supporting planning, integrations and coordination of primary health care services across four key areas – including mental health and service access and quality. NMML will lead planning; integration and coordination of primary health care services for people with a mental illness. Under service access and quality, NMML supports the active integration of after-hours pilot of ReGen AoD service and NPACER program and is funding a joint police and mental health clinical project to provide dual secondary response.

The **Hume/ Whittlesea Primary Care Partnership** identifies four priority areas 1) Integrated design and delivery in key health and wellbeing areas including mental health; 2) responsiveness and effectiveness supporting organisations to better meet future growth demands; 3) collaboration, evidence and innovation and 4) consumer involvement and 5) prevention in practice. Throughout the plan there is a strong focus on support and identifying opportunities for improved service integration and collaboration.