

Hobsons Bay

South West Melbourne



Area (2011): 64km²

Population density (2011): 1,361.3 persons/km

Major centres: Williamstown, Altona, Spotswood

Hobsons Bay has a relatively high level of cultural diversity with 25% of people born in a non-English speaking country and 31% speaking a language other than English at home. There is a slightly lower than average rate of new settler arrivals. The most commonly spoken languages are Arabic, Italian and Greek which together equate for just over 10% of the population. Unlike neighbouring Wyndham, Hobsons Bay's growth rate is projected to remain below average for the next 2 decades and its population distribution across age groups is broadly similar to that of the state.

AOD risk taking behaviour by young people is significantly higher than the state average. Men's health is an area of particular concern for Hobsons Bay, with male obesity (26.6%) and male smoking rates (30%) both well above average (17.4% and 18.5% respectively). Persons who do not meet fruit and vegetable intake and physical activity guidelines are among the highest in the state.

Hobson's Bay is relatively well serviced and is close to the state average in many key socio economic indicators. It ranks fifth in the state for its residents having adequate work/life balance (61.9%).

Population

	HOBSONS BAY	VICTORIA
TOTAL POPULATION	88,408	
ABORIGINAL & TORRES STRAIT ISLANDER PEOPLES	0.6%	0.8%
DIVERSITY		
PERCENT BORN OVERSEAS	32.7%	27.7%
PERCENT BORN IN NON ENGLISH SPEAKING COUNTRY	25.0%	20.9%
PERCENT SPEAKING LANGUAGE OTHER THAN ENGLISH AT HOME	30.9%	24.2%
PERCENT WITH LOW ENGLISH PROFICIENCY	5.5%	4.0%
NEW SETTLER ARRIVALS PER 100,000	1,384.5	1,415.1
SOCIO-ECONOMIC INDICATORS		
UNEMPLOYMENT RATE	4.9%	5.8%
INDEX RELATIVE SOCIO ECONOMIC DISADVANTAGE	1002	1000
MEDIAN HOUSEHOLD INCOME	\$1,286	\$1,216
MORTGAGE STRESS / RENTAL STRESS	9.7% / 22.0%	11.4% / 25.1%
GAMING MACHINE LOSSES PER HEAD OF ADULT POPULATION	\$683.7	\$549.50
PERCENT OF POPULATION WITH FOOD INSECURITY	3.2%	4.6%
FAMILY INCIDENTS (RATE PER 1000 POPULATION)	9.3	10.8
TOTAL OFFENCES (RATE PER 1000 POPULATION)	78.1	72.2
SUBSTANTIATED CHILD ABUSE (RATE PER 1000 POPULATION)	5.1	6.7
CHILD PROTECTION ORDERS (RATE PER 1000 POPULATION)	4.2	5.2
CHILDREN IN OUT OF HOME CARE (RATE PER 1000 POPULATION)	4.5	4.6
COMMUNITY		
PEOPLE WHO FEEL SAFE WALKING ALONE AFTER DARK	70.7%	70.3%
PERCENT OF POPULATION NEAR TO PUBLIC TRANSPORT	88.2%	74.2%
PEOPLE WHO BELIEVE THERE ARE GOOD FACILITIES AND SERVICES IN THE LGA	88.2%	85.2%
HEALTH & WELLBEING		
PERSONS REPORTING FAIR OR POOR HEALTH	15.8%	15.9%
GENERAL PRACTICES PER 1000	1.0	1.2
PHARMACIES PER 1000	0.2	0.2

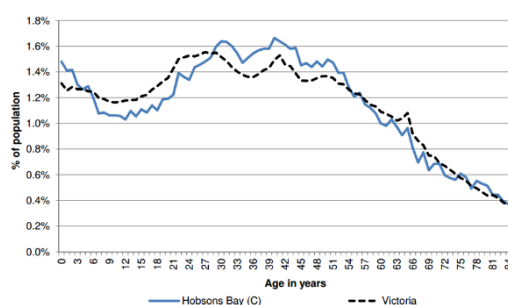
Top 5 overseas countries of birth:

- UK (4.8%)
- India (2.9%)
- Italy (2.1%)
- NZ (2.1%)
- Vietnam (1.7%)

Top 5 languages other than English:

- Arabic (3.8%)
- Italian (3.4%)
- Greek (3.2%)
- Vietnamese (2.1%)
- Maltese (1.7%)

Age distribution (2012)



Alcohol, tobacco & other drugs in Hobsons Bay

	HOBSONS BAY	VICTORIA
PERCENTAGE PERSONS WHO ARE CURRENT SMOKERS (18+)	21.5%	15.7%
18+ FEMALES CURRENT SMOKERS	13.6%	12.9%
18+ MALES CURRENT SMOKERS	30.0%	18.5%
ALCOHOL		
PERCENTAGE PERSONS AT RISK OF SHORT TERM HARM FROM ALCOHOL CONSUMPTION	11.3%	10.2%
PURCHASED ALCOHOL IN THE LAST 7 DAYS	38.2%	36.3%
7 DAY \$ SPEND ON PACKAGED LIQUOR (OF THOSE PURCHASING)	\$43.0	\$45.00
7 DAY \$ SPEND AT A LICENSED PREMISES (OF THOSE PURCHASING)	\$40.0	\$45.00
ALCOHOL AMBULANCE RATE: TOTAL (ATTENDENCES PER 10,000)	30.5	
ALCOHOL AMBULANCE RATE: 15-24 YRS (ATTS./10,000)	29.5	
ALCOHOL AMBULANCE RATE: MALE (ATTS./10,000)	41.1	
ALCOHOL AMBULANCE RATE: FEMALE (ATTS./10,000)	19.8	
ALCOHOL ADIS RATE: TOTAL (TX EOCS PER 10,000)	20.4	
ALCOHOL ADIS RATE: 15-24 YRS (TX EOCS PER 10,000)	30.4	
ALCOHOL ADIS RATE: MALE (TX EOCS PER 10,000)	29.2	
ALCOHOL ADIS RATE: FEMALE (TX EOCS PER 10,000)	11.6	
ALCOHOL ED RATE: TOTAL (PRESENTATIONS PER 10,000)	15.9	
ALCOHOL ED RATE: 15-24 YRS (PRSTNS/10,000)	27.1	
ALCOHOL ED RATE: MALE (PRSTNS/10,000)	20.2	
ALCOHOL ED RATE: FEMALE (PRSTNS/10,000)	11.6	
SERIOUS ROAD INJURIES DURING HIGH ALCOHOL HOURS: TOTAL (PER 10,000)	2.5	
SERIOUS ROAD INJURIES DURING HAH: 15-24 YRS (PER 10,000)	5.6	
SERIOUS ROAD INJURIES DURING HAH: MALE (PER 10,000)	3.4	
SERIOUS ROAD INJURIES DURING HAH: FEMALE (PER 10,000)	1.4	
ALCOHOL ASSAULT HAH: TOTAL (PER 10,000)	10.1	
ALCOHOL ASSAULT HAH: 18-24 YRS (PER 10,000)	23.3	
ALCOHOL ASSAULT HAH: MALE (PER 10,000)	8.6	
ALCOHOL ASSAULT HAH: FEMALE (PER 10,000)	10.9	
ALCOHOL FAMILY VIOLENCE RATE: TOTAL (DEFINITE INCIDENTS PER 10,000)	17.4	
ALCOHOL FAMILY VIOLENCE RATE: 18-24 YRS (DEFINITE INCIDENTS PER 10,000)	18.7	
ALCOHOL FAMILY VIOLENCE RATE: MALE (DEFINITE INCIDENTS PER 10,000)	9.8	
ALCOHOL FAMILY VIOLENCE RATE: FEMALE (DEFINITE INCIDENTS PER 10,000)	24.9	
YOUNG PEOPLE		
PERCENT 15-17 YEAR OLDS WHO DRANK ALCOHOL IN THE PAST 30 DAYS	56.5%	24.7%
PERCENT 15-17 YEAR OLDS WHO SMOKED IN THE PAST 30 DAYS	29.1%	12.9%
PERCENT 15-17 YEAR OLDS WHO EVER - USED MARIJUANA	29.3%	10.9%
PERCENT 15-17 YEAR OLDS WHO EVER - SNIFFED GLUE OR CHROMED	12.3%	7.8%
PERCENT 15-17 YEAR OLDS WHO EVER - USED OTHER ILLEGAL DRUGS	9.4%	3.0%
PHARMACEUTICALS		
PHARMACEUTICAL AMBULANCE RATE: TOTAL (ATTENDANCES PER 10,000)	19.4	
PHARMACEUTICAL AMBULANCE RATE: 15-24 YRS (ATTS./10,000)	23.3	
PHARMACEUTICAL AMBULANCE RATE: MALE (ATTS./10,000)	14.6	
PHARMACEUTICAL AMBULANCE RATE: FEMALE (ATTS./10,000)	24.3	
PHARMACEUTICAL ADIS RATE: TOTAL (TX EOCS PER 10,000)	1.4	
PHARMACEUTICAL ADIS RATE: 15-24 YRS (TX EOCS PER 10,000)	0.13	
PHARMACEUTICAL ADIS RATE: MALE (TX EOCS PER 10,000)	1.6	
PHARMACEUTICAL ADIS RATE: FEMALE (TX EOCS PER 10,000)	1.2	
PHARMACEUTICAL ED PRESENTATION RATE: TOTAL (PRESENTATIONS PER 10,000)	15.1	
PHARMACEUTICAL ED RATE: 15-24YRS (PRSTNS/10,000)	50.4	
PHARMACEUTICAL ED RATE: MALE (PRSTNS/10,000)	9.3	
PHARMACEUTICAL ED RATE: FEMALE (PRSTNS/10,000)	20.9	
ILLCIT DRUGS		
ILLCIT AMBULANCE RATE: TOTAL (ATTS./10,000)	9.7	
ILLCIT AMBULANCE RATE: 15-24YRS (ATTS./10,000)	20	
ILLCIT AMBULANCE RATE: MALE (ATTS./10,000)	11.4	
ILLCIT AMBULANCE RATE: FEMALE (ATTS./10,000)	7.9	
ILLCIT ADIS RATE: TOTAL (TX EOCS PER 10,000)	29.2	
ILLCIT ADIS RATE: 15-24 YRS (TX EOCS PER 10,000)	68.3	
ILLCIT ADIS RATE: MALE (TX EOCS PER 10,000)	40.2	
ILLCIT ADIS RATE: FEMALE (TX EOCS PER 10,000)	18.2	
ILLCIT ED RATE: TOTAL (PRSTNS/10,000)	3.3	
ILLCIT ED RATE: 15-24 YRS (PRSTNS/10,000)	9.3	
ILLCIT ED RATE: MALE (PRSTNS/10,000)	4.1	
ILLCIT ED RATE: FEMALE (PRSTNS/10,000)	2.5	
SERVICE USE & ACCESS		
DRUG USE & POSSESSION OFFENCES PER 1000 POPULATION	3.6	3.8
DRUG AND ALCOHOL CLIENTS PER 1000	5.8	5.8

Comparisons & context:

*Red text – shows where the figure is in the top 3 highest rates for all 14 LGAs in the North & West catchments.

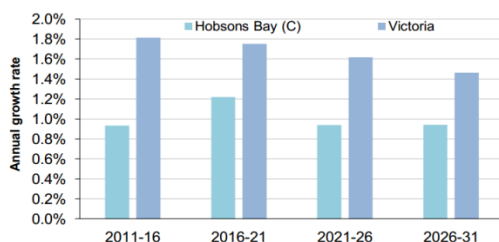
* Orange text – shows that the rate is higher than the state average

Mental health in Hobsons Bay

	HOBSONS BAY	VICTORIA
PEOPLE REPORTING HIGH/VERY HIGH LEVELS OF PSYCHOLOGICAL DISTRESS (RANK)	12.1% (22)	11.10%
LIFETIME PREVALENCE OF ANXIETY AND DEPRESSION M/ F	12.4/ 24.2	14.6/25.0
SERVICE USE		
REGISTERED MENTAL HEALTH CLIENTS PER 1000 POP (RANK)	9.5 (61)	11.1
MHCSS CLIENTS 2014	96	
MHCSS CLIENTS 2014 RATE PER 1000 POPULATION	1.59	
PROPORTION OF PEOPLE WHO SOUGHT PROFESSIONAL HELP FOR A MENTAL HEALTH PROBLEM	14.50%	12.4%
YOUNG PEOPLE		
CHILDREN WITH EMOTIONAL/BEHAVIOURAL PROBLEMS AT SCHOOL AGE (RANK)	3.6% (45)	4.3%
ADOLESCENTS WHO REPORT BEING RECENTLY BULLIED (RANK)	14.4% (63)	17.9%

Population Projections

Average annual population growth rate 2011 to 2031



The projected annual average growth rate for Hobsons Bay between 2011 and 2031 is significantly lower than that of Victoria.

Aligned planning priorities



The **City of Hobsons Bay Health and Wellbeing Plan 2013-2017** identifies mental health issues for young people with psychological distress and hospitalization. Alcohol and drug issues are not specifically identified. The plan has four goals and number of strategies to address these within the remit of local government. Goals include *an inclusive, resilient and healthy community; well planned, vibrant and sustainable places, quality infrastructure and public open spaces and places and to be an innovative, proactive and leading organisation*. It states that the council will *provide a range of accessible, high quality services and social supports, foster community wellbeing, protect and promote public health and community safety and work in partnership with key stakeholders to attract and advocate for the services needed in Hobsons Bay*.



South Western Melbourne Medicare Local 2013 Needs Analysis details smoking, alcohol consumption and mental health as areas of community concern. Refugee, housing and AOD services are finding it hard to address the needs of clients with a history of trauma. Key actions include training for local health professionals in areas of specialised mental health (including forced adoption, personality disorders, perinatal depression, eating disorders, anxiety, depression and suicide prevention). Other relevant activities (though not specific to AOD or mental health) include improving health literacy, a focus on Laverton and improving service access and coordination for refugee clinics within general practice.



The **Health West Partnership Strategic Plan (2013-2017)** has four key focus areas of service coordination/integrated chronic disease management, prevention, aboriginal health and home and community care. Its four activity streams are health literacy, integration, community participation and collaborative action. The Integrated Mental Health Services for Refugee Asylum Project aims to improve access and participation by refugees to mental health services. AoD does not specifically feature in 2013 – 14 activity but past prevention and advocacy work has included activity to increase access to needle, syringes and opioid replacement therapies; and other AOD issues in the west.



Better Health Plan for the West (BHPW) is a 10-year plan developed in partnership with over 20 agencies across primary care, acute health, government, social support and other sectors delivering services in the Western Region of Melbourne. The BHPW identifies mental health as one of three high priority health issues, and details a planned response to this issue. It has key initiatives under health literacy, models of care, human resources, service provision, e-health, research and partnership coordination.

The **South West Mental Alliance Enhancing Client Pathways and Transition Through Mental Health Services Project (2012)** identified the difficulties in navigating services and moving through the system and recommended a number of actions to improve this. A planning forum in 2014 identified as a priority an “orientation” program for service providers to better understand each other’s services.